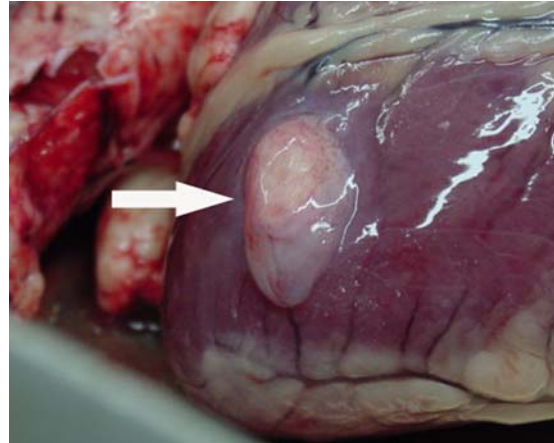


“Ever heard of Sheep Measles?” It’s really not “Measles” as we humans know it, the “Measles” are really cysts caused by two different tapeworms, spread by DOGS! This disease then can be controlled to some extent by deworming dogs. Yes, as you might expect coyotes also carry the tapeworms - but worming dogs can substantially reduce this problem.

**Ovine Cysticercosis**, more commonly referred to as “**Sheep Measles**”, is an important cause of carcass condemnation. A silent disease, inapparent until slaughter, cutting into the profits of sheep producers across the United States.

**Muscular Cysticercosis** or “measles” in sheep is characterized by the development of cysts, often degenerated, in skeletal muscle, heart muscle, and the diaphragm. Cysts are first grossly visible about two weeks after infection as a pale, semi-transparent spot about 1.0mm in diameter. Cysts reach maturity in about 12 weeks and are white in color and about 1.0 cm. These cysts may later calcify.

**Visceral Cysticercosis** is caused by the larval stage of *Taenia hydatigena* called *Cysticercus tenuicollis*. These larvae migrate in the liver for several weeks before emerging and attaching to the surface of an organ or to the peritoneum. They form a large fluid filled cyst which may be up to 8.0cm in diameter.



Bladder worm on the heart, caused by the larvae of *Taenia hydatigena* (*Cysticercus tenuicollis*).

### DIAGNOSIS

In sheep there are no clinical signs of cysticercosis. Currently diagnosis is made by finding the cysts at slaughter. The two tapeworms involved elicit an antibody response in the sheep which can be measured by a serological (blood) test. This test is not economically feasible.

### TRANSMISSION/LIFE CYCLE

To complete the life cycle tapeworms require two hosts, the adult worm develops in one host and the larval stage in a different host. The adult worm always occurs in the small intestine, and the larval stages occur in a variety of hosts in different locations.

The adult worms are long and consists of a large number of segments, the end segments break off and are passed in the feces. Each segment contain a large number of eggs in which the larval stage develop. The larval stage is ingested and travels via the blood stream to their site of development.



Cysticercosis is transmitted to sheep eating forages contaminated with tapeworm eggs shed by dogs and coyotes via their feces. The infective larvae penetrate the intestinal wall and are transported by blood to the heart and muscles. It takes about 56 days for the cysts to develop in the sheep and about 7 weeks for the tapeworm to develop in the dog. In the case of muscular cysticercosis, the larvae form cysts in the heart, diaphragm, masseter (cheek) and other muscles. They appear as white granules in the tissue, thus the name “measles”. These may result in complete carcass condemnation. They also cause hide damage which is not detected until tanning, thus making the hide useless.

In the case of visceral cysticercosis, the newly developed larvae migrate through the liver leaving blood filled channels. This causes condemnation of the liver. The bladder worm may attach to other organs causing their condemnations.



Condemned carcass due to *Cysticercosis ovis* found in the leg muscles.



## CONTROL/PREVENTION

Do **NOT** allow dogs to feed on sheep carcasses. Deworm dogs at least 2X per year, and up to 4 X's per year for high exposure (farm) animals. Require hunters, etc. to deworm their dogs prior to coming on your property. Vaccination of sheep is not currently available in the U.S.



## TREATMENT

Praziquantel (Droncit®) 34 mg tablets  
31-45lb dog = 2 X 34 mg tablets  
46-60lb dog = 4 X 34 mg tablets  
>60lb 5 (do not exceed 5 tabs or 170 mg)

Droncit tablets retail at \$2.75 - \$6.50 each. One tube of EquiMAX (formulated and approved for horses) contains 900mg Praziquantel or enough medication for 6 animals weighing over 60#. The cost is about \$2.50/treatment. This product used in dogs is Extra-Label and should be discussed with your veterinarian for proper use and dosage.

## ECONOMIC IMPACT

In one plant, which processes on average 400,000 lambs per year, carcass condemnation due to measles costs approximately \$40,000 (\$.10 per every lamb processed). This does not include down time on the processing line or damaged carcasses being sliced when inspectors look for additional cysts. These figures applied to the total number of lambs processed in the US each year amounts to a \$280,000 loss to the industry.



Colorado Wool Growers Association

Dr. Cleon V. Kimberling

Sheep Health, Management  
& Reproduction Specialist  
Fort Collins, CO 80523  
970-214-2142  
cleonvk@msn.com

Geri Parsons, CVT

Cooperative Extension  
Colorado State University  
Fort Collins, CO 80523  
970-297-4514  
geri.parsons@colostate.edu

Jeruesha Nichols, CVT

Cooperative Extension  
Colorado State University  
Fort Collins, CO 80523  
970-297-1248  
jeruesha@colostate.edu

**Colorado**  
**State**  
University  
Cooperative  
Extension



“Sheep Measles”  
&

“Bladder Worms”

Ovine Cysticercosis

